

CWS/ATR/ID/2017/GB

Annual Technical Report on Industrial Design Information Activities in 2017 submitted by Intellectual Property Office

I. GENERAL OVERVIEW OF RECENT DEVELOPMENTS IN INDUSTRIAL DESIGN INFORMATION ACTIVITIES CARRIED OUT BY THE OFFICE

Outline of main policies and plans aimed at development of industrial design information activities and expected time frames for their realization.

The office worked on the ascension to The Hague agreement. Work was carried out on out IT systems and business processes to implement the ascension to The Hague Agreement. This work is now complete. We became part to Hague 13 June 2018.

New projects launched or resumed this year in the context of the policies(plans) mentioned above, short description: aims, partners, tasks

See above relating to The Hague agreement.

Main areas of industrial design information activities and related information and communication technology (ICT) practices which were in the focus of attention last year

N/A

Statistics: changes in terms of application filings and grants (registrations) with respect to previous year; trends or areas experiencing rapid changes

Designs Applications

2016	10030
2017	19272 (increase of 92%)

Designs Registered

2016	8481
2017	17076 (increase of 101%)

The above information is based on the calendar year.

Other matters and useful links (URLs): annual report of the Office, news page, statistics, etc.

Our website www.ipo.gov.uk moved in October 2014 to a new Government website GOV.UK and the new web address is now:

<https://www.gov.uk/government/organisations/intellectual-property-office>

Statistics related to trade marks at the Intellectual Property Office can be accessed through the annual reports, annual reviews and facts and figures at:

<https://www.gov.uk/government/statistics?departments%5B%5D=intellectual-property-office>

II. SERVICES AND ACTIVITIES RELATED TO INDUSTRIAL DESIGN INFORMATION CARRIED OUT BY THE OFFICE

Information and support provided by the Office to applicants regarding filing on paper and/or e-filing (instructions, seminars, etc.) – URLs

Information regarding filing on paper and/or e-filing can be found at <https://www.gov.uk/apply-register-design>

Availability of the application dossier in electronic form

Registered designs can be searched by design number or owner name at:

<https://www.gov.uk/search-registered-design>

Registered designs can also be searched by other methods such as classification at:

<https://www.tmdn.org/tmdsview-web/welcome>

Classification and reclassification activities; classification system used, e.g., International Classification for Industrial Designs (Locarno Classification), other classification

Designs are classified using the Locarno Classification system. The classification is completed internally by the Designs examiners.

Other activities

The IPO is an active participant in WIPO's Standing Committee on the Law of Trade Marks, Industrial Designs & Geographical Indications and meets with other participating offices at WIPO during Hague Working Group.

The UKIPO is a member of Locarno and meets bi-annually with other members of the Locarno Committee of Experts meetings.

The UK participates in EUIPO convergence projects on improving the quality of data in Designview. We are also actively involved in EUIPO liaison meetings on designs.

III. SOURCES OF INDUSTRIAL DESIGN INFORMATION PROVIDED BY THE OFFICE

Main types of publications in the field of industrial design information, outline of the content (industrial design applications, design patents, registrations, etc.) and medium (on paper, on CDs, online - URLs)

The Registered Designs Act 1949 makes up part of the Designs legislation in the UK

https://assets.publishing.service.gov.uk/government/uploads/system/uploads/attachment_data/file/737827/Registered_Designs_Act_1949.pdf

The Registered Designs Rules 2006

https://assets.publishing.service.gov.uk/government/uploads/system/uploads/attachment_data/file/737829/Consolidated_Design_Rules.pdf

Registered Designs Examination Practice sets out guidance on the Intellectual Property Office work practices

<https://www.gov.uk/government/publications/registered-designs-examination-practice>

Designs Practice Notices (DPNs) announces changes to our practice, such as how we interpret a provision of the law, or how we handle applications

<https://www.gov.uk/government/collections/designs-practice-notice>

Official Gazettes: main types of announcements, frequency of publication, medium (on paper, on CDs, online - URL), etc.

The designs journal is published daily and contains details of all designs that have been registered

<https://www.gov.uk/check-the-design-journal>

Information products (coverage, medium, etc.) available to examiners, including external documentation and databases

Examiner use the Registered Designs Examination practice guidance, the Registered Designs Act 1949, the Registered Designs Rules 2006, and case law. They also liaise with Patent Examiners if the design is of a technical nature.

Information products (coverage, medium, etc.) and services available to external users; conditions of access (e.g., free of charge, subscription, etc.)

Our main office is in Newport, South Wales, where the public can file applications and discuss possible IP protection with an IPO Advisor. In addition, we also have a front Office in London where customers can file applications.

Legal status information (kind of information, coverage, medium, etc.)

The legal status is contained on the UK Register and may be searched by design number or owner's name

<https://www.gov.uk/search-registered-design>

Other sources

Nothing to report

IV. ICT SUPPORT TO SERVICES AND ACTIVITIES RELATED TO INDUSTRIAL DESIGN INFORMATION CARRIED OUT BY THE OFFICE

Specific software tools supporting business procedures within the Office: general description, characteristics, advantages, possible improvements

Ap ply For De sign	https://www.gov.uk/apply-register-design apply to register designs (max 50) with the IPO electronically. In terms of improvement, some associated technology such as hangfire etc. may be due for review/replacement.
ICE	Internet Case Enquiry - https://www.gov.uk/search-registered-design Find details of a UK design registered with the Intellectual Property Office. This read only application is the official register for the IPO. Possible improvement - DB only refreshed once a day by batch processing. Possible improvement would be to update data in real time.
DE PS	This application is for internal use only and allows examiners to process paper and electronic designs. A technical backlog has been created to cover component upgrade strategy of application versions/java version etc. Major code releases are shared with EUIPO in their central code repository. Dynatrace is currently being used on DEPS to help identify performance bottlenecks and implement performance improvements.
De sig nsV iew	Designview is maintained by EUIPO and is used to search for designs registered in the UK by the: World Intellectual Property Organization European Union Intellectual Property Office UK data is fed into this system by FTP of zipped XML files created by nightly batch job. A complete refresh of UK data has been planned in order to address some missing fields etc that are impacting searches on DesignsView.
Da ve	The Business use DAVE (for efiled applications only) for checking if any priority claims declared are exact copies of the filing submitted to the earlier country (or not) - If not then they write to the customer for a copy It also contains a copy of the images pre conversion into DEPS for reference. This application is for internal use only.

Hardware used to supporting business processes of the Office

Staff access their Windows 7 desktops via thin clients (WYSE terminals) which are connected to two 24 inch wide screen monitors.

Internal databases: coverage, updates, interlinks with external sources

DEPS – Database used to process designs applications.

Establishment and maintenance of electronic search file: file building, updating, storage, documents from other offices included in the search file

N/A

Administrative management electronic systems (register, legal status, statistics, and administrative support)

Management information is produced from DEPS

Other matters

N/A

V. PROMOTION ACTIVITIES AIMED TO SUPPORT USERS IN ACCESS AND EFFICIENT USE OF INDUSTRIAL DESIGN INFORMATION

Office's library (if deals with industrial design information): equipment, collection management, network of libraries in the country, cooperation with foreign libraries.

The Patlib Network was founded by the European Patent Office but PATLIB UK is autonomous and driven by its members and the UK Intellectual Property Office (IPO). PATLIB UK is a network of 16 libraries around the UK that offer help and support on intellectual property as well as other business topics. They are based in local libraries and therefore open to any member of public that wishes to attend. One of the key offerings of the network is access to support in intellectual property searching. All centers have a minimum requirement to supply assisted searches to businesses, which includes the UK designs, Designview. Many take this further however by providing lessons to guide businesses on completing basic initial searches. Training to deliver these services has been supplied by the IPO through the IP Master Class programme as well as ongoing individual training sessions as needed.

As the centres are located within local libraries they make the most of free databases such as Designview and due to lack of funding do not pay for any additional databases or tools. Our office, through the PATLIB UK Network and the British Library, takes part in numerous exchange programmes with other patent libraries around the world as in previous years.

Publications related to different business procedures and industrial design information sources available to users, for example, books, brochures, Internet publications, etc.

Our main office is in Newport, South Wales, where the public can file applications and discuss possible IP protection with an IPO Advisor. In addition, we also have a front Office in London where customers can file applications.

Cooperation with universities, technology and innovation support centers, etc.

Our Business Outreach continues to raise awareness of IP, helping businesses reach an informed decision on how to use, manage, and enforce their IP to its full potential. This is done via a portfolio of business tools including mobile and online resources, seminars, workshops/training and working with partners to deliver broader dissemination and understanding of IP:

<https://www.gov.uk/government/publications/intellectual-property-for-business>

Education and training: training courses, e learning modules (URLs), seminars, exhibitions, etc.

We continue to communicate IP awareness to young people from primary through to secondary school. We have developed a range of curriculum linked education resources to raise awareness of innovation, creativity and intellectual property in partnership with UK Music, Aardman Animations and the Industry Trust. Campaigns are supported through crackingideas.com an online hub to support UK and devolved Governments' curriculums plus advice and guidance for schools on intellectual property. We have introduced a new online tool for Universities (IP Tutor) helping students and lecturers understand intellectual property rights:

<https://www.gov.uk/government/publications/ip-in-education/ip-in-education>

Other activities

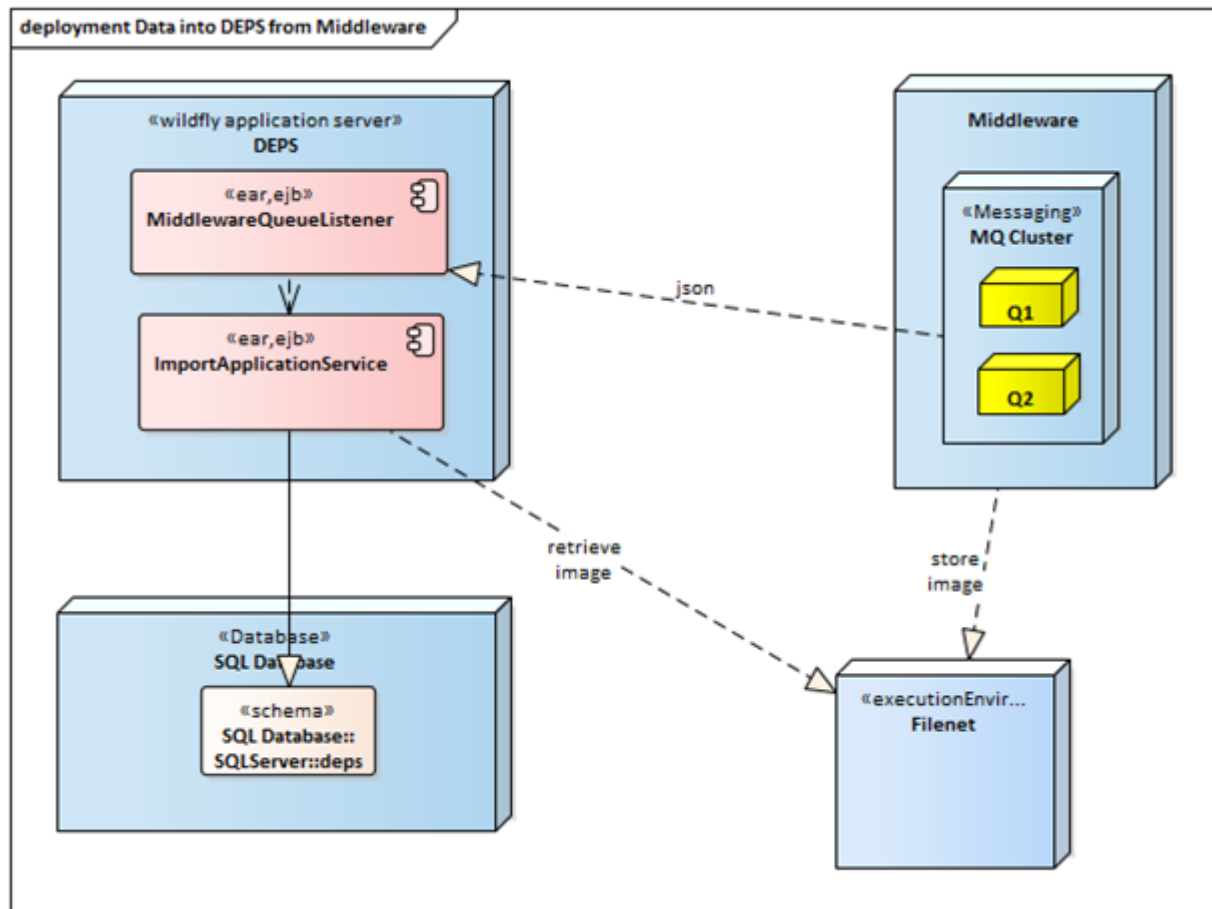
All marketing and PR is carried out within the External Communications team and we are achieving great coverage particularly on our social networking platforms. We have recently launched an Instagram account with a focus on cultivating a following and specifically targeting entrepreneurs and designers:

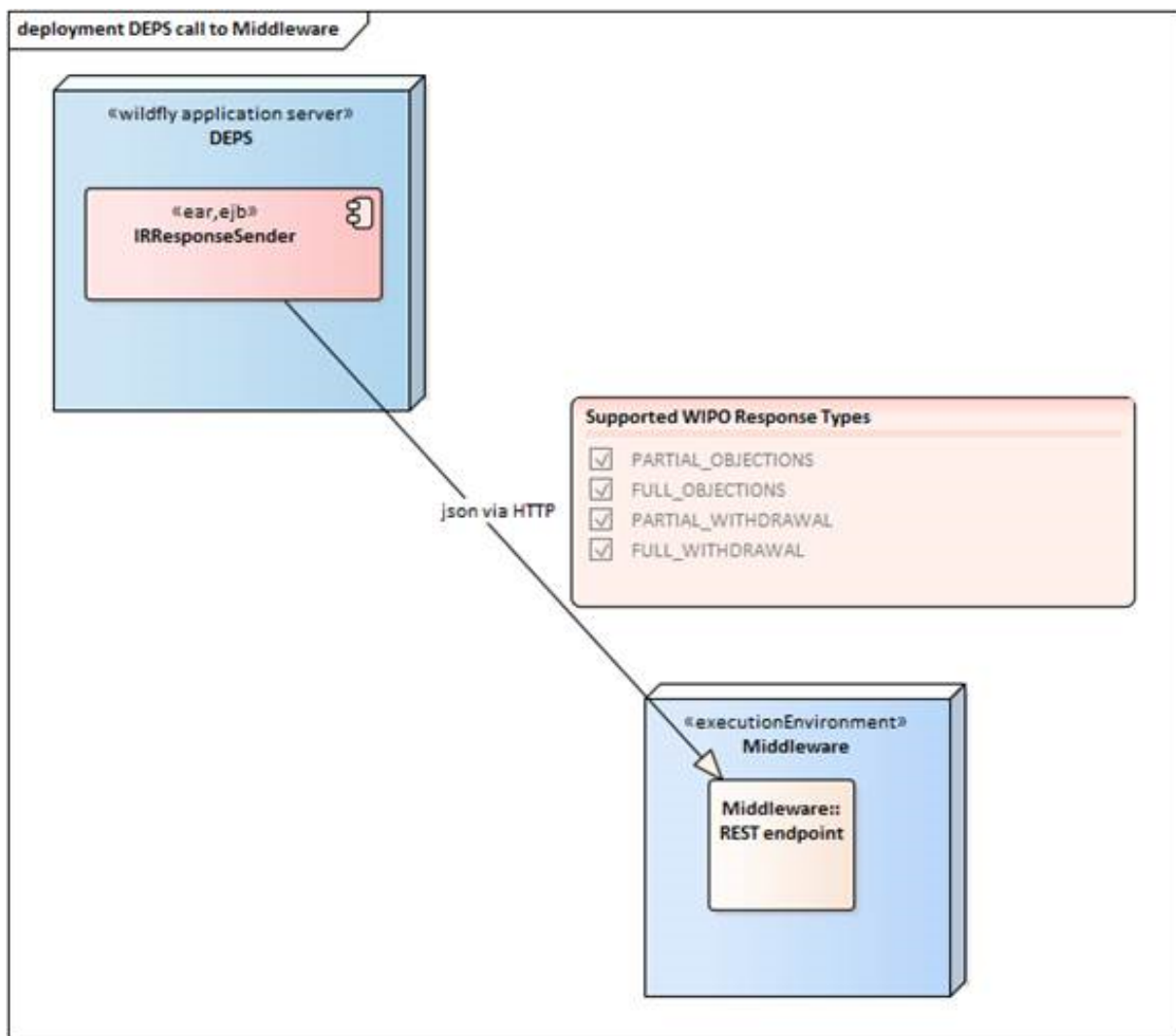
<https://www.instagram.com/ipforbusiness/?hl=en>

VI. INTERNATIONAL COOPERATION ACTIVITIES IN THE FIELD OF INDUSTRIAL DESIGN INFORMATION

International exchange of industrial design information in machine-readable form (e.g., Official Gazettes)

DEPS release for processing of Hague IR designs. This architecture uses IBM MQ/Middleware as per architecture below.





Participation in international or regional activities and projects related to industrial design information

N/A

Assistance to developing countries

Provided information to Indian office on design case law with respect to immorality/obscenity/contrary to public order objections.

UK experts ran an IP and innovation workshop in Thailand and Indonesia. This looked at business strategies on how to register rights.

Other activities

N/A

VII. OTHER RELATED MATTERS

Nothing to Report.